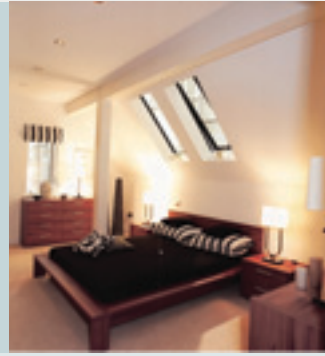
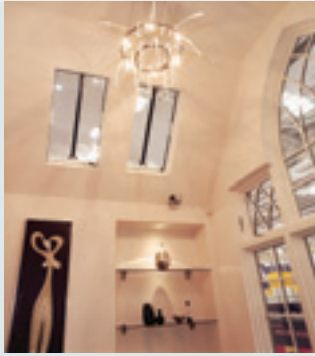




# the Rooflight Company

*The Innovators In Rooflighting*



the Replica Rooflight®

# Features of the Replica Rooflight®

## Simplify your planning process

Ultra-low profile and fine lines ensure planning officials are reassured about the visual impact of the rooflights.



*Hatton Manor, a Grade II listed, former Victorian water pumping station in Staffordshire where over 50 Replica Rooflights® were specified for 14 duplex apartments.*

## Differentiate your project

### Linked options

The Replica Rooflight® linked options allows for unlimited runs of rooflights by means of a Linking T Bar.



*2 x Replica Rooflights linked; an unlimited amount of rooflights can be linked whilst retaining their independent operation*

### Variety of styles

To differentiate your project and to add value, Replica Rooflights® are available in 2 and 3 pane combinations.



*This newly constructed barn shows 2 and 3 pane combinations*

## Summary of Key Benefits

- Simplified planning process
- Activ™ self-cleaning glass as standard
- Designed to be competitively priced
- Trouble free operation and maintenance
- BS 6375 weathertightness tested, BS EN 1279 approved glazing
- Easy and quick installation
- 5 year guarantee on glass
- 15 year guarantee on frame
- Renowned technical support

## Trouble free operation and maintenance

Top-hung rooflights with optional gas struts not only have aesthetic advantages, but are also functional and practical. They offer unobstructed views, an easy means of escape and do not protrude into the room. (Please note: Replica 1 does not meet B1 means of escape)

In addition the Replica Rooflight® and its sister product range from the Rooflight Company, the Conservation Rooflight® are the **only** rooflights to have the patented *Thermoliner*® thermal lining, which ensures that no condensation problems occur.

**If you are choosing rooflights for a property in an industrial or maritime area or which is subject to a potentially corrosive or polluted environment call our Customer Services team and ask about the different material specifications we offer to suit your specific needs.**



*Pilkington Activ™ self-cleaning glass on the outer pane comes as standard and provides a convenient solution to cleaning.*

## Interior finish to suit the design

The Replica Rooflight® offers designers the ability to create their own interior finish. They are not constrained by the typical varnished pine finish of the internal frame.



*In this show home by Potton a contemporary and uncluttered appearance is created. The features of the Replica Rooflight® are equally suited to traditional and contemporary projects.*



For rooflights positioned out of reach the pole & pole winder option provides a practical and economic manual alternative to electric opening. For all opening options, including electric options see p7.



# Replica Rooflight® Case Studies



*Over 100 Replica Rooflights® were installed in this collection of 3-storey town houses to maximise the amount of daylight entering the homes, brightening the interiors and creating an airy, spacious feel.*



## Heritage Point, Belper, Derbyshire

Replica Rooflights® proved to be the ideal solution for a period-style residential development in a historic market town in Derbyshire. Dating back to the 13th century, Belper has been designated a World Heritage location, which was a major consideration for leading regional house builder Radleigh Homes.

David Swann, Director of Derby based Montague Architects Ltd, who designed the new development comments: "As the homes are sited in a conservation area, all aspects of their design were rigorously scrutinised to ensure they fit in sensitively with the surrounding architectural environment. We selected Replica Rooflights® after close consultation with the Planning Officer from Derby City Council because their authentic period appearance and fine steel lines were perfectly suited to the look we were trying to achieve with this scheme."



*Externally the show home presents a traditional appearance, but the interior features a contemporary design with an emphasis on bright and airy open plan spaces.*

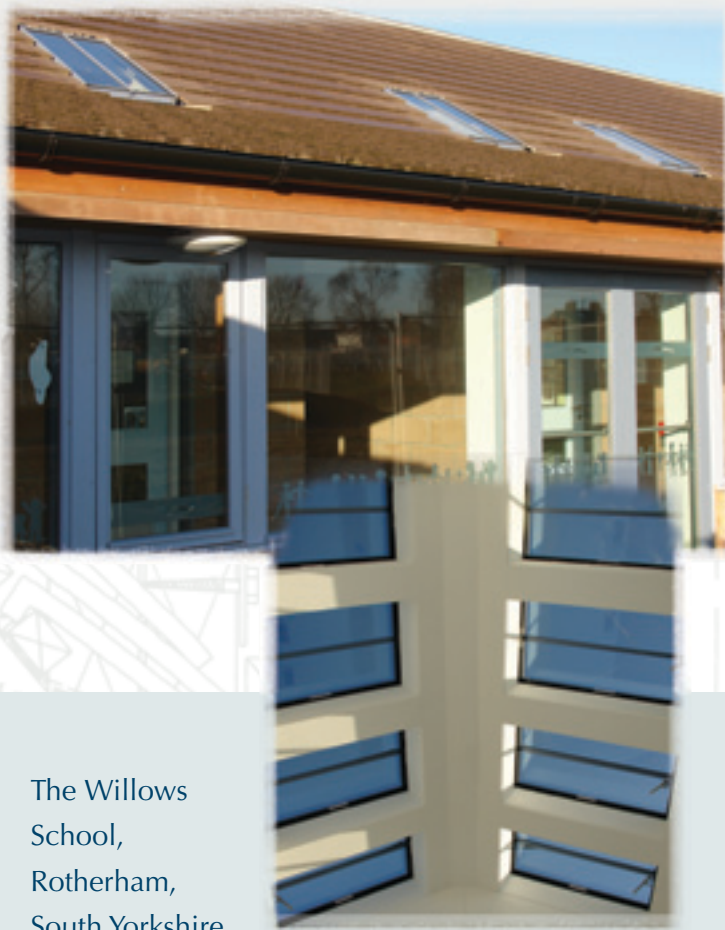


## Potton Show Home, Swindon, Wilts

### Potton House at the new National Self Build and Renovation Centre, Swindon

Joe Martoccia of Potton Homes explains the rationale behind the specification: "With this new range of homes, the challenge was to incorporate products and features that sat well with both the Gothic/late Victorian-style exteriors and the modern living spaces inside. Seeing the fine lines, slim profile and authentic period style of the Replica Rooflight®, we knew it would be perfect for this project, and its unobtrusive internal aspect suits the minimalist interior design. We worked closely with the team at the Rooflight Company, who went out of their way to match our requirements exactly; we were very impressed with the service they offered."

For further information on the Potton Home visit: [www.buildstore.co.uk/mykindofhome/](http://www.buildstore.co.uk/mykindofhome/)



The Willows  
School,  
Rotherham,  
South Yorkshire.

With a firm brief to provide a safe and homely environment making use of natural light and ventilation as far as possible, a total of 43 Replica Rooflights® were specified.

Jan Armitage, Architect at Rotherham District Council explains why they were selected: “We were particularly impressed with the slim, clean lines of the Replica Rooflight, which sat well with the subtle yet welcoming building style we were aiming for on this project. The range of rooflights available from other leading brands were quite bulky and looked clumsy when compared to the Replica model, and the Rooflight Company were very flexible in helping us to achieve the exact Pigeon Blue colour we needed to match the external paint finish.”

*Project Manager at Cornerstone, Mr Mark Foxall commented: “We were pleasantly surprised at the ease of installation of the Replica Rooflights.”*

Grange St Mews, St Albans, Herts.

A combination of Conservation Rooflights® and Replica Rooflights® were installed on this conversion of commercial properties into mews houses by award-winning architects, Briffa Phillips. The selection of appropriate rooflights was pivotal in obtaining local authority planning approval.



*For more information on the UK's widest range of rooflights, visit: [www.therooflightcompany.co.uk](http://www.therooflightcompany.co.uk) or phone 01993 833108.*











Hatton Manor, Stone, Staffs.

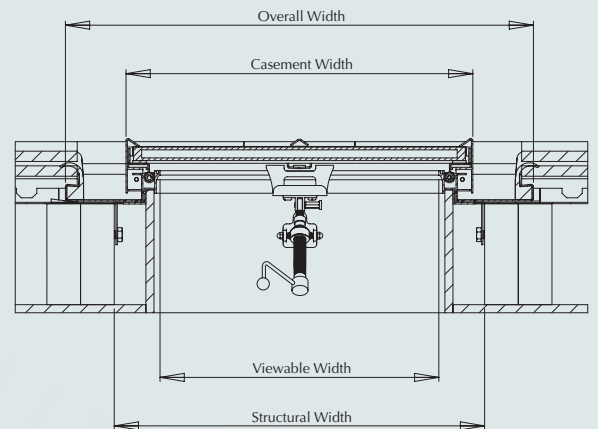
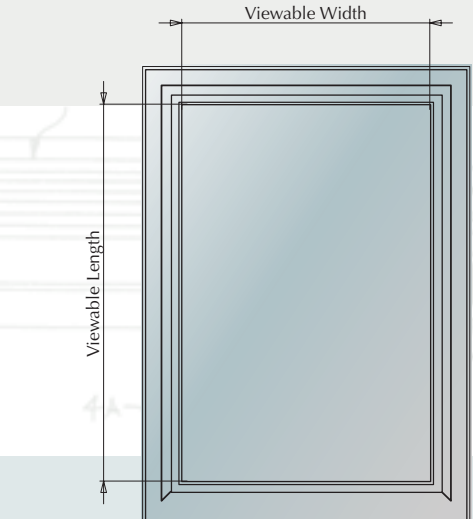
Hatton Manor is a Grade II listed former Victorian water pumping station which has undergone a multi-million pound conversion into 14 duplex luxury apartments.





# the Replica Rooflight® - Sizes

Viewable Length \ Viewable Width	410mm	510mm	610mm	710mm	810mm
560mm	 Replica 1	 Replica 1 Linking Bar			
910mm		 Replica 2	 Replica 2 and 2/3 Linking Bar	 Replica 2/3	
1160mm			 Replica 3	 Replica 3 and 3/3 Linking Bar	 Replica 3/3
1410mm				 Replica 4	 Replica 4 Linking Bar



All Replica sizes are available with optional gas struts however the Replica 1 Rooflight doesn't comply with B1 means of escape.

Linking bars allow multiple Replica Rooflights of the same viewable length to be linked for continuous runs of rooflighting.

Standard glass specification is 4mm K toughened inner and 4mm toughened Activ™ outer; please call for availability of other options.

Dimensions (mm).

Model	Viewable Width x Length	Casement Width x Length	Structural Width x Length	Overall Width x Length
Replica 1	410 x 560	515 x 695	550 x 700	695 x 895
Replica 2	510 x 910	615 x 1045	650 x 1050	795 x 1245
Replica 2/3	710 x 910	815 x 1045	850 x 1050	995 x 1245
Replica 3	689 x 1160	715 x 1295	750 x 1300	895 x 1495
Replica 3/3	787 x 1160	915 x 1295	950 x 1300	1095 x 1495
Replica 4	691 x 1410	815 x 1545	850 x 1550	995 x 1745

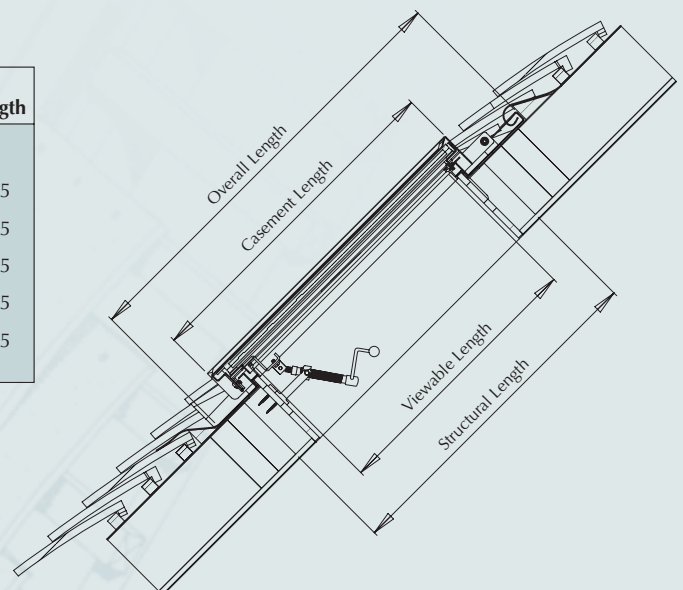
## Key Dimensions table

Viewable:- The unobstructed viewable area. Inside looking out

Casement:- The external dimension of the opening sash

Structural:- Structural opening

Overall:- The overall size of the rooflight



As part of our programme of ongoing product development specifications, fittings and dimensions may be amended without notice. Before forming openings please contact Customer Service or visit: [www.therooflightcompany.co.uk](http://www.therooflightcompany.co.uk).

# the Replica Rooflight® Ironmongery and Blind Options

Images are a representation of the actual product. Actual product detail may vary.

Hand winders for rooflights within reach

Pole winders for rooflights out of reach



Option E Brass hand winder



Option J Chrome hand winder



Option D Brass pole winder



Option L Chrome pole winder

Description	Opening	Option
Brass telescopic hand winder	150mm	A
Brass telescopic hand winder	300mm	E
Chrome telescopic hand winder	150mm	J
Chrome telescopic hand winder	300mm	B

Description	Opening	Option
Brass telescopic pole winder	150mm	K
Brass telescopic pole winder	300mm	D
Chrome telescopic pole winder	150mm	L
Chrome telescopic pole winder	300mm	C

## Poles - Required to operate Pole Winders

- Option F: Aluminium 1.0m length
- Option G: Aluminium 1.5m length
- Option H: Aluminium 2.0m length
- Option I: Aluminium 1.75-3.0m telescopic



## Electric actuators

not available with gas struts

Option TOPP ACK4: Electric chain actuator  
24v, 230v 110-400mm



TOPP ACK4

Option D4: Electric linear actuator 240v 180 & 300mm

An on/off switch is required for these products. Please ask for details



Option D4, Electric linear actuator



## Roller Blind Colour Options

Should you have any specific requirements, please call our Customer Services to discuss further options. Alternatively for additional roller blind colours, please visit [www.newhousetextiles.com](http://www.newhousetextiles.com)

Natural Plains Collection. 100% cotton semi-transparent roller blinds.



White Misty White Cream Light Grey Ochre Chocolate Navy Blue Black

Coma Collection. The Coma Collection is made from acrylic-coated fabric which provides darkening of the room, without total blackout

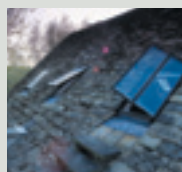


White Feather White Cream Vanilla Cement Pale Grey Mole Cocoa Navy Blue Black

Ask for a free colour swatch book

New 'High Blackout' blind system is now available.

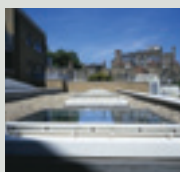
## Conservation



"Conservation continues to have a high profile in the building profession and the Rooflight Company's commitment to excellence in this field is well recognised."

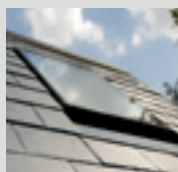
Jack Pringle,  
Past President of the RIBA

## Flat Roofs



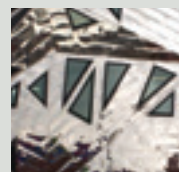
The Rooflight Company offers Plateaus, Polyedge, Lanterns and Pyramid rooflights, and has an unrivalled reputation for quality design of both contemporary and historic rooflights for flat roofs.

## Contemporary



Innovation has always been synonymous with the Rooflight Company and this has put it at the forefront of rooflight design. Today neo® spearheads the company's rapid development into contemporary architecture.

## Bespoke



Will Alsop and Zaha Hadid, two internationally renowned architects, utilised the Rooflight Company's bespoke design services to accentuate their buildings' character. In a world typically dominated by mass production Special rooflights greatly enhance the architect's design.



# the Rooflight Company

A trading name of The Metal Window Company Ltd.

the Conservation Rooflight® the Replica Rooflight® and *Thermoliner*® are registered trademarks of The Metal Window Company Ltd.  
Registered address: The Old School House, Leckhampton Rd.,  
Cheltenham, GL53 0AX Company No. 2881879

In the interest of continuous product development, it may be necessary to amend specifications without alteration to technical literature.  
All drawings and designs are the Copyright and Designright of The Metal Window Company Ltd.

Brochure design by Designroom [www.fourwalls.ca](http://www.fourwalls.ca)

September 2008



Manser Medal



BS EN 1279-2  
KM 93754



RECYCLE



INVESTOR IN PEOPLE

The Rooflight Company is committed to sustainable environmental practices. This brochure is printed on Chlorine free pulp obtained from sustainable forests.

Wychwood Business Centre  
Milton Road  
Shipton-under-Wychwood  
OX7 6XU

Tel: 01993 833108

Fax: 01993 831066

email: [info@therooflightcompany.co.uk](mailto:info@therooflightcompany.co.uk)

[www.therooflightcompany.co.uk](http://www.therooflightcompany.co.uk)