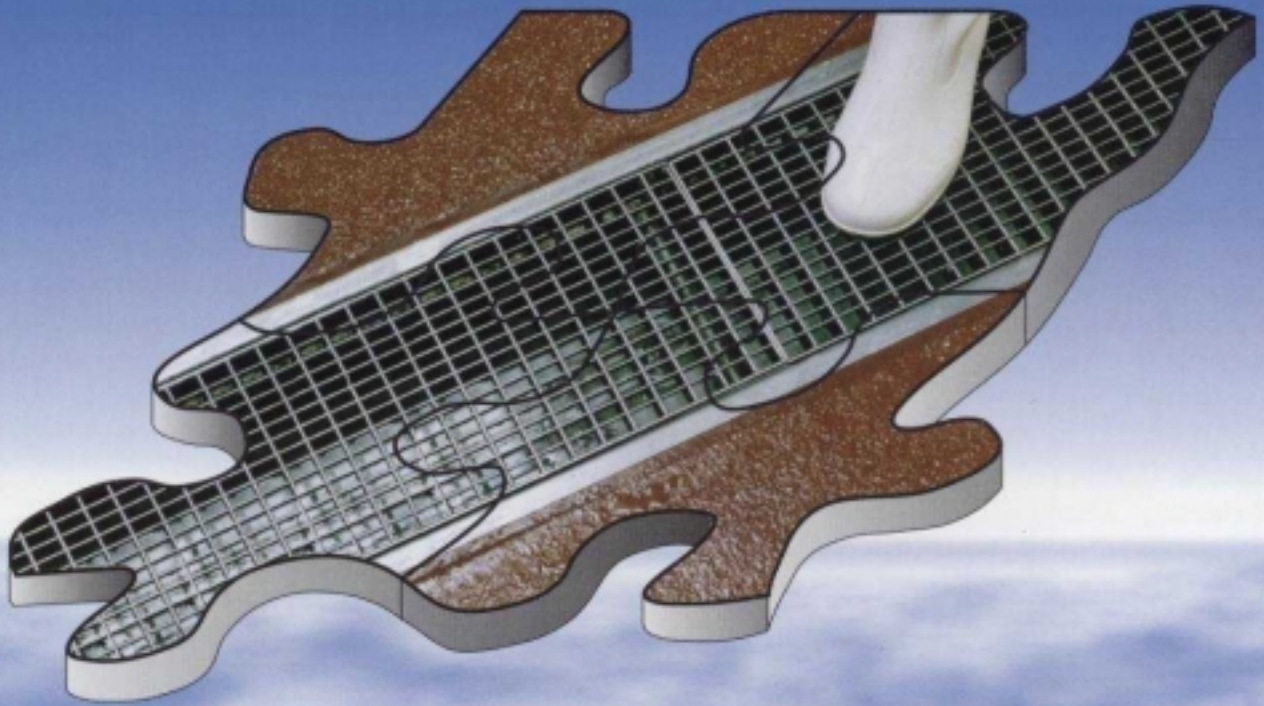


Modular 6000



Stainless Steel
Channel Drainage



Component Developments

DESCRIPTION:

Component Developments' stainless steel floor drainage channels and gratings offer the specifier a strong, hygienic, functional and attractive solution to floor drainage design.

Manufactured from austenitic stainless steel grades 304 or 316 to BS 1449 Part 2 1983 in nominal 3m or 6m lengths, channels incorporate anchor tangs, levelling bolts and a bolted flanged gasket joint to assist installation.

Gratings are supplied in nominal 1m and 0.5m lengths, with a wide choice of patterns and strengths to suit various loadings and functions.

The Modular 6000 series is designed to be used in conjunction with the 5000 series gullies, see main technical brochure 'The Beauty of Stainless Steel is Timeless'.

DESIGN:

The smooth surface finish of stainless steel provides a self-cleansing velocity for liquids at very shallow gradients. The self-cleansing velocity is 0.75 m/s. Velocities below this figure require manual flushing.

The Modular 6000 series has a standard overall width of 155 with a grating width of 125. For wider channels to accommodate equipment discharge creating deluge and turbulence, specify the 3000 series detailed in main technical brochure.

The discharge of the drainage channel is relative to the flow rate capacity of the outlet gully (see 5000 series of gullies in main technical brochure). Discharge capacities of both channel and gully will be reduced when conveying water-borne solids. Typical gradients are 1% (1:100) for liquid waste, and 2% (1:50) for water-borne solids.

The channel profile is suitable for tile, resin, and concrete floors. For applications where heavy loads such as pallet trucks are anticipated, or thermal shock may cause expansion, the 6010 EF profile is recommended. This expansion frame is supplied factory tack welded to the reinforced channel, and offers a true square strong edge for dressing in resin. The floor finish is separated from the channel, thus reducing the possibility of perimeter cracking under constant heavy traffic or thermal shock. (see installation).

INSTALLATION:

After careful unloading, identify the channel lengths and position them in correct sequence adjacent to the floor rebate into which they are to be installed.

- 1 Connect gully to drainage pipework, see installation of 5000 series in main technical brochure.
- 2 Bolt sections together using the gaskets and bolts provided. Tighten bolts from bottom centre, working outwards, one left, one right to equalise the pressure.
- 3 Fit the 'O' ring seal to the channel outlet spigot.
- 4 Lift channel into floor rebate and connect to gully. Using the levelling bolts provided, adjust channel height to finished floor level.
- 5 Bed levelling bolts with stiff-mix concrete or similar and check top of channel has remained level.
- 6 Backfill void, ensuring concrete/grout is compacted into shoulders. Allow to cure.
- 7 For deep channels, plug outlet and fill with water to ensure channels do not float or move while concrete cures.
- 8 After curing, twist out temporary brace bars. Do not hammer out, to avoid distortion.
- 9 Remove debris from channel. Clean with soapy water, and flush channel.
- 10 Ensure the system is adequately protected from possible damage resulting from the continuation of building work in the area.

Channels with Expansion Frame

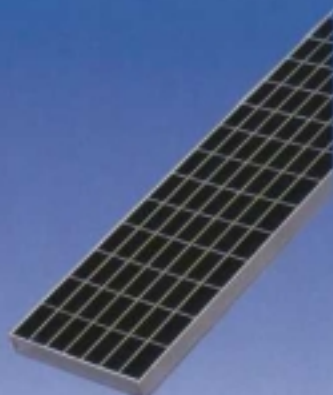
- 1 Place and level channel as previously described, and bolt down expansion frame.
- 2 Backfill and apply floor finish.
- 3 Cut or grind out factory tack welds between the expansion frame and channel to isolate each item.
- 4 Fill void with sealant recommended by the flooring contractor.
- 5 Clean and protect as previously described.



Type 6001. Class B 125 KN
Type 6002. Class C 250 KN
Type 6003. Class E 600 KN
to EN 124



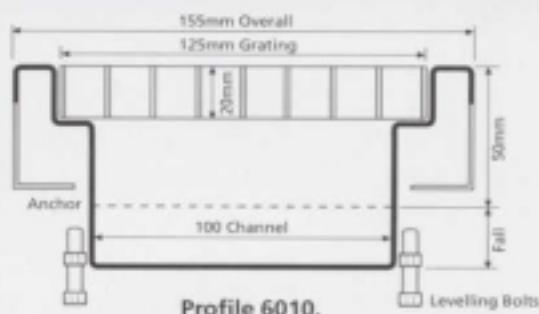
Type 6004.
Anti-Slip Mesh
30 x 15 Mesh
20 x 2 Load Bars



Type 6005.
Smooth Mesh
30 x 15 Mesh
20 x 2 Load Bars



Type 6006.
Perforated 2.5 Thick
10 Diameter Holes



Profile 6010.



Profile 6010EF. Expansion Frame

GULLIES:

The Modular 6000 series is designed to be used in conjunction with the 5000 series of gullies. The smallest gully, type 5150, is 155 wide, the same width as the channel, forming a continuous profile. Larger gullies are readily available.

5150 1.8 l/s 5200 3.0 l/s 5300 6.0 l/s

Refer to main technical brochure for description, design, product range and installation details.

SPECIFICATION:

The following is a typical specification of the Modular 6000 system. Please consider channel function, grating loading and gully size before specifying.

Modular 6000 series drainage channel and grating supplied by Component Developments, telephone: 01952 588488.

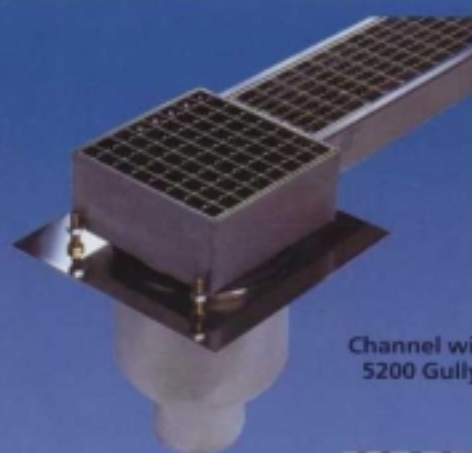
155 wide with 125 grating aperture, 100 bore.

Built-in 1% fall, anchors and levelling bolts.

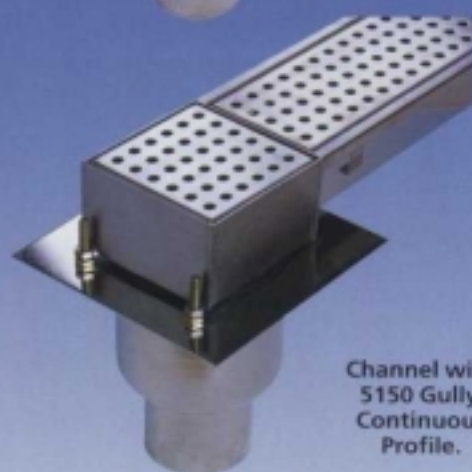
Grating type 6004, anti-slip square mesh, 30x15, 20x2.

Gully type 5150. Height adjustable with basket, trap and 110 o.d. vertical spigot. Grade 304.

The above is typical, please consider grating and gully type. Contact our technical design department for assistance.



**Channel with
5200 Gully.**



**Channel with
5150 Gully.
Continuous
Profile.**



The Modular Range is supplementary to the main product portfolio which includes:

- Drainage Channels
- Manhole Covers
- Gratings
- Surface Protection
- Gullies
- Special Fabrications

The beauty of Stainless Steel is Timeless



Component Developments is a Division of Webster-Wilkinson Ltd

Telephone: 01952 588488 Telefax: 01952 684395

Website: www.componentdevelopments.com

Email: sales@componentdevelopments.com

Subject to technical improvement without notice.