



MANUFACTURERS AND SUPPLIERS OF STAINLESS STEEL:

DRAINAGE CHANNELS

GRATINGS

GULLIES

MANHOLE COVERS

SURFACE PROTECTION



component developments

OVERVIEW

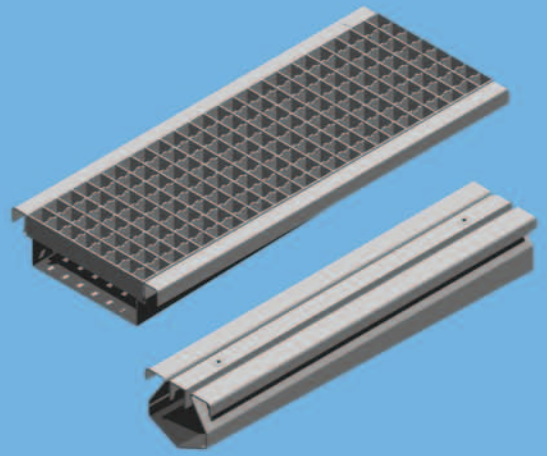
STAINLESS STEEL SOLUTIONS...

Our range of products is designed to provide a hygienic and cost effective solution for drainage, access and surface protection.

DRAINAGE CHANNELS

Channels are a hygienic and efficient method of conveying waste water from equipment discharge and floor washing to drain, rather than allowing the liquid to flow across the floor with the possibility of causing hygiene and health and safety issues. They reduce the need for complicated cross-falls to a number of individual gullies thus requiring significantly less excavation and underground drainage work.

- Choice of size and profile to suit all capacities, floor finishes and loadings.
- Built-in fall - no surveying equipment required with fine adjustment using levelling assembly.
- Choice of gratings, mesh or perforated to suit all loading requirements.
- Integrate perfectly with our trapped gullies to form a hygienic, easily maintained washdown system.

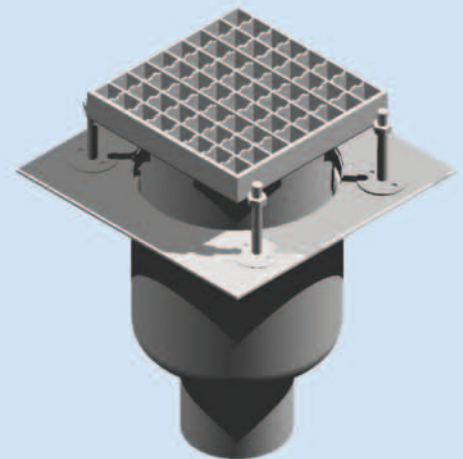


TRAPPED GULLIES

The Gully assembly provides a connection between floor surface and underground pipework with the ability to catch solids and prevent odours, whilst acting as a rodding point enabling the user access to remove blockages from underground pipework.

Providing the specifier with a hygienic, rugged and durable surface drainage solution which can meet almost any performance and design requirement.

- Utilised as single washdown points or integrated within a channel system.
- Choice of size with capacities from 0.9 to 15 litres per second to suit all floor finishes.
- Height adjustable with fully removable, lift out internal components including waste basket.
- Choice of gratings, mesh or perforated to suit all loading requirements.
- Additional standard fittings include D.P.M clamping flanges, back inlets, tundishes and sealed covers.



SURFACE PROTECTION

Ideal wherever corners, surfaces and edges are vulnerable to impact damage our range includes:

CORNER GUARDS

Standard and heavy duty options available to either integrate with or adhere to wall finishes.

CAPPING

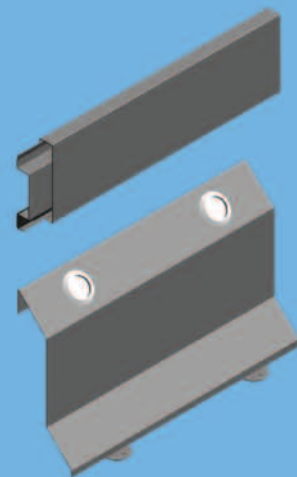
Various profiles available including radiused, peaked and flat to protect dwarf wall surfaces.

BUFFER RAILS

Protection for wall surfaces, examples being trolleys or hospital beds within corridors.

KERBS

A protective, hygienic and low maintenance solution between floor and floor finishes.



MANHOLE COVERS

Fully integrated within the floor finish our covers provide lockable and double sealed solutions for covering manholes.

Manufactured from stainless steel the exact type of cover required simply depends upon the floor finish.

4200 RANGE

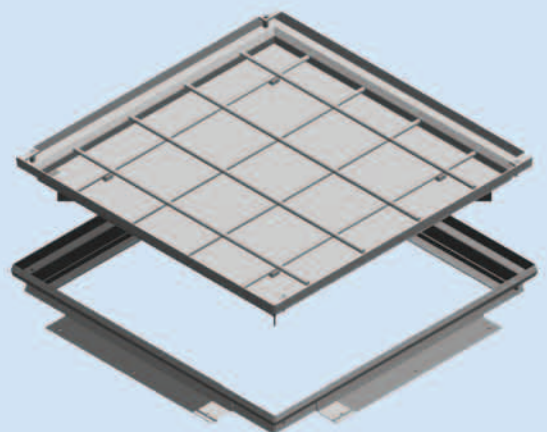
Recessed / infill covers to accept a screed with a tile or resin floor finish.

4300 RANGE

Vinoseal access cover with vinyl clamping strip to mechanically clamp vinyl sheet floor finishes securely in position.

With variations upon the two designs available including heavy-duty assemblies and multiple covers to form a continuous ducting system.

Rodding Eyes to suit all floor finishes, loadings are also available as part of our standard product range



INDUSTRY SOLUTIONS...

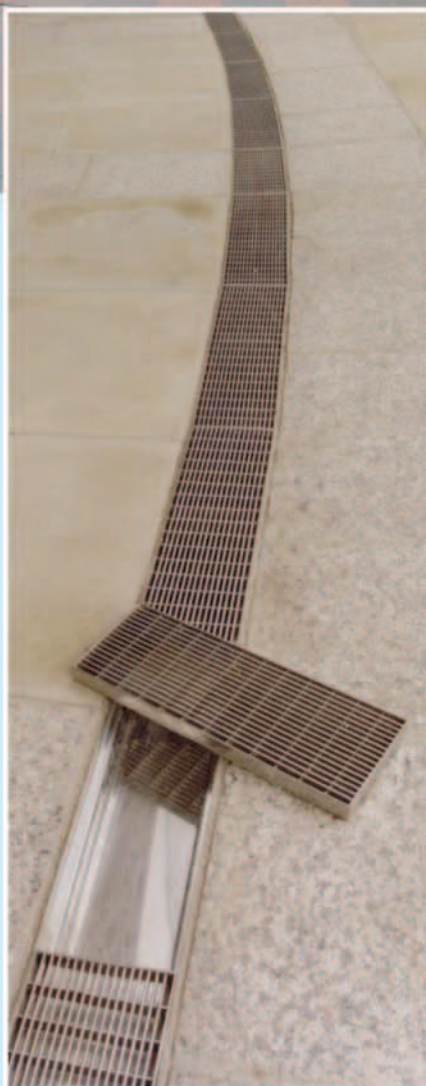


The new National Stadium located in Wembley, will not only be one of the best stadiums in the world, but also a significant landmark for London having a breath-taking effect on the city's skyline. On a clear evening the structure can be seen for 13 kilometres with the arch itself having a span of 315 metres, making it the largest single roof span in the world. Built to the highest specification, using the latest technology, the stadium will be the ultimate venue for sports, music, exhibitions and conferences.

Component Developments has supplied over one hundred and fifty drainage channels incorporating our Heelsafe gratings for use within the stands, and over one hundred heavy duty drainage gullies designed specifically to suit the floor construction of the concourse areas.

Drainage channels were supplied to the showers of the home and away dressing rooms as well as a number of bespoke items designed by our own technical team.

Architect:
Foster & Partners / HOK S+V+E
Contractors:
Multiplex / M.J.N. Colston
Client:
Wembley National Stadium Ltd



As one of the largest drinks companies in Europe, Constellation Europe is a leading producer and importer of wine from Australia, South Africa, USA, New Zealand and Chile.

Brand names include Hardys and Stowells wines, Blackthorn, Gaymers Olde English, and Diamond White ciders, and the ever popular Stones Ginger Wine and Babycham.

Component Developments was asked to supply two 20m straight drainage channel systems with anti-slip mesh gratings and trapped outlet gullies for the wine bottling plant in Bristol. However, the automated production lines severely limited access for installation, and the project had to be completed over a bank holiday weekend. C.D. technical staff were on hand to measure, design and programme the intricate project. The Modular 6000 channel system was used, - including a purpose designed 'push-fit joint' connection between the individual channels, and an overhead levelling system, which both contributed to a quick and trouble free installation. Anti-slip mesh gratings is a stock, off the shelf item.

Consultants:
P.H.I. Projects Ltd
Client:
Constellation Europe



H.M. Prison Hull opened in 1870 with a traditional Victorian style of building, and has since expanded with the site considerably increasing in size. There are now nine residential wings providing an operational capacity of over a thousand inmates. Subsequently the kitchens are of a substantial size, providing over 4,000 meals per day.

Component Developments supplied the prison with three channel systems situated within the kitchen. The system was designed with an expansion angle specifically to suit the area's wash-down requirements as well as a number of large tilting kettles discharging directly into it. Totalling over sixteen metres in length and falling to our type 5300 trapped gullies with integral waste basket, the outlet's capacity is six litres per second.

Solutions for prisons also include surface protection and shower drainage with locked gratings as required for prison projects. All options available within a lead time to suit the requirements for working in an operational prison.

Specifier:
H.M.P. Hull
Contractor:
P.W.C. Ltd
Client:
H.M. Prison Service



As the largest pharmaceutical company in the world, Pfizer endeavours to discover, develop, and manufacture market leading prescription medicines for humans and animals, as well as many of the worlds best known consumer brands. Its' Sandwich plant in Kent is the European Headquarters for Research and Development, and the main site for Global Manufacturing. Pfizer has recently occupied a brand new building that has won an 'excellent' rating under the BREEAM scheme, which is the worlds most widely used means of reviewing and improving the environmental performance of office buildings.

For the Kent plant, Component Developments has supplied numerous stainless steel drainage and access solutions with the most recent being a type 3611V compact channel suitable for a vinyl floor. The compact channels do not require gratings and are available with or without a built in fall. The vinyl clamp in the channel profile insures that the floor covering is mechanically clamped, so as to prevent fraying and causing a trip hazard whilst meeting the stringent standards of hygiene required in the pharmaceutical industry.

Contractor:
Boulling Group plc
Client:
Pfizer Ltd



Tryton Foods is the home of Aunt Bessie's, the market leader in frozen Yorkshire puddings with over two million produced each day.

With recent improvements to their state of the art production facilities, Aunt Bessie's portfolio has grown to include a range of "ready-to-bake" biscuits and cakes, making the company the fastest growing brand within UK frozen foods.

Providing a complete solution for Tryton Foods, Component Developments worked hand in hand with the associated trades on site to supply various designs of floor drainage channels, multiple trapped gullies, access covers, and kerbing all manufactured from stainless steel. Due to the service offered by CD, bespoke systems were designed and manufactured to the site's exact requirements to provide comprehensive, functional and hygienic solutions for the workplace.

Flooring Contractor:
National Flooring Company
Client:
Tryton Foods Ltd



The "More London" project is another development by Sir Norman Foster who has been responsible for re-shaping the skyline of London.

The site includes offices, a supermarket, a health club, shops, cafes, bars, restaurants and the new London Hilton Tower Bridge Hotel. The brand name of Hilton is world renowned, symbolising quality and exclusivity in every location.

Due to the tight site schedule, gully pots for the channel systems were dispatched from stock allowing contractors on site to proceed, while at the same time, CD's design team produced technical drawings detailing invert levels and critical dimensions for site to ensure products supplied complied with the specification prior to manufacture, in line with our commitment to quality procedures detailed in ISO 9001:2000.

Specifier:
Roger Preston & Partners
Contractor:
Hills Electrical
Client:
More London Development Ltd





In one of the country's biggest P.F.I. deals, the Government with its PFI partners, has invested over £422m

in building and equipping the brand new University College London Hospital. With state-of-the-art facilities phase one of the project covers an area of 72,500 square metres in total and houses 721 inpatient beds.

Component Developments worked with BCJV, a joint venture consisting of Balfour Beatty, Amec and Haden Young to design over 445 metres of fire lift drainage channels. Suitable for a vinyl floor and with the ability to withstand a traffic load of in excess of 1 tonne, the system was also designed to meet the requirement of a flow rate of 25 litres per second.

Also supplied were 78 manhole covers and almost 60 metres of channels for hydrotherapy pools, requiring gratings suitable for barefoot traffic. The kitchen area was fitted with our anti-slip gratings. The CD technical team was on site even before the building structure was complete, ensuring that no questions went unanswered, and the systems supplied fitted requirements perfectly.

Specifier:
Haden Young
Main Contractor:
Building Contractors Joint Venture
Client:
University College Hospital NHS Trust

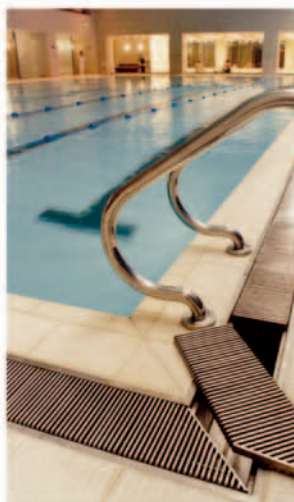


The Ashburton Learning Village is a flagship development for the Government's initiative for Public-Private Funding partnerships.

The facility has been noted for its innovative design and energy efficient features and been praised by the former RIBA President George Ferguson who claimed that it "sets a new design standard for schools". It has since become a contender for this year's Biennale Award for Best New Building.

The contribution of Component Developments was a number of drainage channels situated in shower areas. Supplied to site in one week to meet the requirements of the contractor's programme, the channels used two trapped outlets per system positioned to suit existing pipe-work. Standards utilised commonly in schools also include our type 4200 and 4300 access covers and surface protection.

Architect:
Penoyre & Prasad
Contractor:
Norwest Holst Construction
Client:
Croydon Council in partnership with Jarvis Accommodation Services.



With 400 clubs and over 1 million members, Fitness First is the largest operator of health clubs in Europe.

In twelve years they have grown from a single club, to a business that spans 15 countries.

Working with Fitness First's in house engineering department Component Developments produced a series of modular drainage systems that were adopted as the standard for all Fitness First new builds and refurbishments since 2001. With standard products held in stock and standard delivery periods the partnership between CD, Fitness First and the main contractors on site enabled an efficient and economic solution to ensure our customer's continued success. Other standards produced recently include those for Cannons, Livingwell and Holmes Place leisure facilities.

Specifier:
Fitness First plc – Engineering Department.
Contractor:
J.M. Scully, Pearce Leisure, KFM Shopfitters Ltd, Alfred McAlpine.
Client:
Fitness First plc



STAINLESS STEEL SOLUTIONS ...

As specialists in the manufacture of stainless steel floor drainage, surface protection and access covers, we have supplied the construction industry for over 25 years. Our manufacturing facility including Sales, Design, Technical, R&D, Engineering, Production and Logistics is based in Shropshire, allowing us to respond to Contractor and Specifier requirements accurately and efficiently.

Due to the demands of the industry, every project we become involved with is unique, with the focus on technical and functional aspects at various levels. We will always strive to meet your requirements, ensuring that we supply the correct information and products at the right time, to meet the specific needs of your project.

WHY USE STAINLESS STEEL?

- Corrosion Resistance
- Durability
- Hygienic Properties
- Cleanability
- Low Maintenance
- Aesthetically Pleasing
- Low cost option in life cycle comparison
- Environmental Friendly - 100% Recyclable



component developments

Halestfield 10 Telford TF7 4QP, UK
Telephone: +44 (0)1952 588488
Facsimilie: +44 (0)1952 684395

Web: www.componentdevelopments.com
info@componentdevelopments.com